



Your TRAILS GUIDE

ENJOYING WALKING, CYCLING & HORSE RIDING
AT KIELDER WATER & FOREST PARK





CONTENTS

- 04 INTRODUCTION AND MAP KEY
- 07 KIELDER DAM - TOWER KNOWE VISITOR CENTRE
- 08 TOWER KNOWE VISITOR CENTRE - LEAPLISH WATERSIDE PARK
- 10 BEECHES WALK (CIRCULAR)
- 11 BULL CRAG PENINSULA STARTING AT LEAPLISH WATERSIDE PARK (CIRCULAR)
- 12 LEAPLISH WATERSIDE PARK - MIRAGE
- 13 MATTHEW'S LINN CAR PARK - MIRAGE
- 14 KIELDER CASTLE VISITOR CENTRE - BAKETHIN WEIR
- 16 KIELDER DAM - THE BELLING & WAVE CHAMBER
- 17 KIELDER DAM - COCK STOOR
- 17 KIELDER DAM - BELVEDERE
- 18 KIELDER DAM - PLASHETTS INCLINE
- 20 KIELDER CASTLE VISITOR CENTRE - SILVAS CAPITALIS
- 21 KIELDER CASTLE VISITOR CENTRE - JANUS CHAIRS
- 22 DUKE'S TRAIL STARTING AT KIELDER CASTLE VISITOR CENTRE
- 23 DUCHESS TRAIL STARTING AT KIELDER CASTLE VISITOR CENTRE
- 24 KIELDER CASTLE VISITOR CENTRE - DEADWATER FELL
- 25 KIELDER CASTLE VISITOR CENTRE - SKYSPACE AND KIELDER OBSERVATORY
- 26 BORDERLINE CYCLING ROUTE - KIELDER CASTLE VISITOR CENTRE - DEADWATER STATION
- 27 TOWER KNOWE VISITOR CENTRE (CIRCULAR)
- 28 BAKETHIN NORTH SHORE WALK (CIRCULAR)
- 30 HINDHOPE LINN STARTING AT BLAKEHOPEBURNHAUGH
- 31 LEWISBURN VALLEY WALK STARTING AT LEWISBURN CAR PARK
- 32 FOR YOUR SAFETY
- 34 MAIN MAP



Kielder Water & Forest Park

Your Great Outdoors

WALK, CYCLE, HORSE RIDE...

With over 600 square kilometres of forest and 27 miles of shoreline to choose from, Kielder Water & Forest Park is the ideal adventure playground. Whether you choose to walk, run, cycle or horse ride, there are a multitude of forest walks, off-road tracks and bridleways awaiting you.

From challenging long distance trails to more leisurely family strolls, this is your wilderness.

KEY

- | | | | |
|--|---|--|---|
| | There & back.
Route is non circular | | Pay phone |
| | Circular route | | Ferry landing point |
| | Easy route with very few hills | | Money required for parking |
| | Moderate route with some notable ascents & descents | | Play area |
| | Strenuous route | | Lakeside Way - South Shore |
| | Suitable for walking | | Lakeside Way - North Shore |
| | Suitable for cycling | | From Kielder Castle Visitor Centre (not using the Lakeside Way) |
| | Suitable for horse riding | | From Tower Knowe Visitor Centre (not using the Lakeside Way) |
| | Suitable for wheelchair or pushchair | | Other trails |
| | Eating place | | |
| | Toilets | | |

THE LAKESIDE WAY

The Lakeside Way multi-user trail offers visitors to Kielder Water & Forest Park a truly unique experience and gives access to the most scenic parts of the lake shore. It opens up opportunities to get closer to some of Kielder's abundant wildlife.

The path encircles Kielder Water's 27 mile shoreline and is almost 26 miles in total. It is suitable for walkers, cyclists, horse riders, mobility scooters and wheelchair users.

Some routes incorporate the Osprey ferry. To be sure you don't miss the boat, we recommend checking in advance for sailing schedules and booking ahead. Also, the ferry has limited space for bicycles and wheelchairs so booking is advised.

The Lakeside Way has a good surface which is suitable for comfortable walking boots, wellington boots or trainers. Some hills may be difficult for younger or less experienced cyclists and it is recommended that people in wheelchairs are accompanied. Horse riders should move at a controlled walking pace only. Visitors using a mobility scooter should ensure batteries are fully charged before setting off. No other motorised vehicles are permitted.

For operational and safety reasons, sections of the Lakeside Way may be closed from time to time. Please check the current status of the path and the ferry timetable, if you are wishing to use it, before setting out. You can do this by contacting or visiting one of the following:

Leaplish Waterside Park T 01434 251 000

Tower Knowe Visitor Centre T 01434 240 436

Kielder Castle Visitor Centre T 01434 250 209

Bellingham Tourist Information Centre T 01434 220 616

It is advisable to pre-book the ferry by contacting Leaplish Waterside Park or Tower Knowe Visitor Centre.

Please note, with the exception of Leaplish Waterside Park, these telephone numbers are seasonally operated.

LAKESIDE WAY SOUTH SHORE

The south shore is approximately 14 miles in length, stretching from Kielder Dam to Kielder Castle Visitor Centre. It includes Tower Knowe Visitor Centre and Leaplish Waterside Park.

LAKESIDE WAY NORTH SHORE



The Lakeside Way on the north shore of Kielder Water runs from Hawkhope car park at the north end of the dam, to Kielder Castle Visitor Centre. The distance is approximately 12 miles. Unlike the south shore, there are no visitor centres along the north shoreline so please be adequately prepared before setting out.

Please note that there is no public vehicular access along the north shore. Parking is available at either end of the route at Hawkhope and Kielder Castle Visitor Centre.

MARATHON WAY!

Adventurous types may wish to complete the whole 26 mile trail in one visit. If cycling, allow three to four hours if you are fit and looking for a good 'pedal out'. Walkers will need a bit longer – eight to ten hours for the athletic! Allow more time if you wish to take in the scenery, have lunch or visit some of the contemporary art and architecture along the path. Remember to keep within your physical capabilities and follow the safety information contained in this leaflet.

For most people, it is far more relaxing and enjoyable to complete small sections of the trail at each visit. This leaflet contains a selection of routes of varying length that allow you to get the most out of this very special corner of Northumberland.

The listed durations are the approximate walking times based on an average walking pace of 2.5 miles per hour. Those wishing to stop and observe local wildlife, have a leisurely stroll or a picnic should allow for extra time.



A KIELDER DAM (NY706875) - TOWER KNOWE VISITOR CENTRE (NY698868)

DISTANCE: ¾ mile or 1.2km (approx. ½ hour) each way

SYMBOLS: TK TK TK
 TK

DIRECTIONS:

Start from the Lakeside View car park at the dam and follow the Lakeside Way along the shoreline to Tower Knowe Visitor Centre. This stretch offers stunning views of the eastern part of Kielder Water including the dam and valve tower. Alternatively, the route can be started at Tower Knowe Visitor Centre. The Lakeside Way crosses the entrance road into the visitor centre. Take the section on the right and head towards the dam.



B TOWER KNOWE VISITOR CENTRE (NY698868) - LEAPLISH WATERSIDE PARK (NY660877)

DISTANCE: 7¼ miles or 12.5km (approx. 3 hour walk) each way

SYMBOL:        Option if using ferry
 TK + Leaplish  TK + Leaplish  TK + Leaplish
 TK + Leaplish   Leaplish

DIRECTIONS:
Start from Tower Knowe Visitor Centre and take the Lakeside Way heading up the valley. After approximately half a mile is the sign for Elf Kirk viewpoint. The short climb to the viewpoint offers fine views of Bull Crag peninsula, Merlin Brae and the north shore.

Return to the Lakeside Way and pass the inlet at Little Whickhope and the moored sailing craft, before descending into the Cranecleugh valley and onto Bull Crag peninsula. At the top of a series of bends which climb onto Bull Crag, there is an option to shorten the journey by following the signs for a shortcut which misses out most of the route around the peninsula.

Those which opt for the longer trip will come across a series of locations which form part of the Kielder Keepsake interactive artwork as well as a good section of the old valley road, most of which is now beneath the water. Both routes take in more art and architecture pieces: Freya's Cabin, Whirling Beans and Shadow, along with the red squirrel hide, before arriving at Leaplish Waterside Park.

Retrace steps to return or take the ferry to Tower Knowe Visitor Centre. It is also possible to travel this route in reverse, starting and finishing at Leaplish Waterside Park with the option of a returning ferry ride from Tower Knowe Visitor Centre.



WHICKHOPE ANCHORAGE



C BEECHES WALK (NY698868) (CIRCULAR)

DISTANCE: ¾ mile or 1.2km (approx. ½ hour)

SYMBOLS:

DIRECTIONS:

Parking for this walk is at Leaplish Waterside Park and access to the start of the walk is on the exit road out of Leaplish Waterside Park, adjacent to the play area.



The Beeches Walk gets its name from the numerous gnarled and moss covered multi stemmed trees which at one time marked a boundary of the Mounces Estate. Originally saplings would have been planted on top of a turf wall. As young trees they were coppiced (cut down to near ground level) and this resulted in their multi-stemmed form. The route is suitable for assisted wheelchair users. On your journey look out for the red squirrel hide and also Shadow and Whirling Beans artworks.

D BULL CRAG PENINSULA STARTING AT LEAPLISH WATERSIDE PARK (CIRCULAR) (NY660877)

DISTANCE: 6⅓ miles or 10.2km (approx. 3 hour)

SYMBOLS: Leaplish Leaplish Leaplish Leaplish

DIRECTIONS:

Leave Leaplish Waterside Park via the Lakeside Way (near to the play ground) and head in the direction of the dam. On approach to Bull Crag Peninsula is Freya's Cabin, part of the art and architecture programme. It forms a fairytale with Robin's Hut which is directly opposite on the north shore. Continue along the peninsula.

Towards the end of Bull Crag the path enters a good section of the old valley road, most of which is now beneath the water, before heading around the southern side of the peninsula and briefly passing through the Bull Crag parking area (an alternative start point for this route).



From here you can see the sheltered waters of Whichhope inlet where boats of all shapes and sizes are moored, before the valley narrows where Craneclough Burn enters the lake. At this point, the Lakeside Way descends into the valley but by continuing straight on (and following the signs) visitors will return to Freya's Cabin and Leaplish Waterside Park. Please note that the latter section on Bull Crag is on forest tracks, some of which have a rough, loose stone surface.

E LEAPLISH WATERSIDE PARK (NY660877) - MIRAGE (NY645905)

DISTANCE: 3.5 miles or 5.6km (approx. 1½ hours) each way

SYMBOLS: Option if using ferry Leaplish Leaplish + M Linn Leaplish Leaplish +Mirage Leaplish

DIRECTIONS:

Start at the play area, follow the signs through Leaplish Waterside Park and head up the valley. After crossing a small bridge, the Lakeside Way weaves along the shore through open moorland and forest until it joins a section of the old valley road as it re-emerges out of the peaty waters of the lake. Turn left and follow the old valley road and the Lakeside Way signs, past the entrance to Hawkhurst Scout Activity Centre and onto Matthew's Linn car park (toilet facilities available).

From there the path descends underneath the C200 road bridge and meanders around the scenic and tranquil Lewisburn inlet, taking in the unique curved suspension bridge. From the bridge, the path climbs to give fine views over the inlet from Patterson's Pause (a natural stone table with chairs) where herons, buzzards and a variety of woodland birds are a common sight.

Continue around the inlet, back underneath the road bridge and onto the Mirage artwork which features hundreds of stainless steel discs suspended in the trees.

To return, either retrace steps or take the ferry from the Mirage jetty to Leaplish Waterside Park. It is also possible to travel this route in reverse, by taking the ferry from Leaplish Waterside Park to the Mirage jetty and returning on the Lakeside Way.



F MATTHEW'S LINN CAR PARK (NY647902) - MIRAGE (NY645905)

DISTANCE: 1 mile or 1.6km (approx. 35 mins stroll) each way

SYMBOLS: Matthew's Linn ML +Mirage £

DIRECTIONS:

A shorter walk around the Lewisburn inlet is possible by parking at Matthew's Linn. Refer to the route details from Leaplish Waterside Park to Mirage (see page 12), starting from Matthew's Linn.





KIELDER CASTLE VISITOR CENTRE
(NY633935) - **BAKETHIN WEIR** (NY643911)

DISTANCE: Just under 2 miles or 3.2km (approx. 1 hour) each way

SYMBOLS: KC + Kielder Village
 KC KC + Kielder Village KC

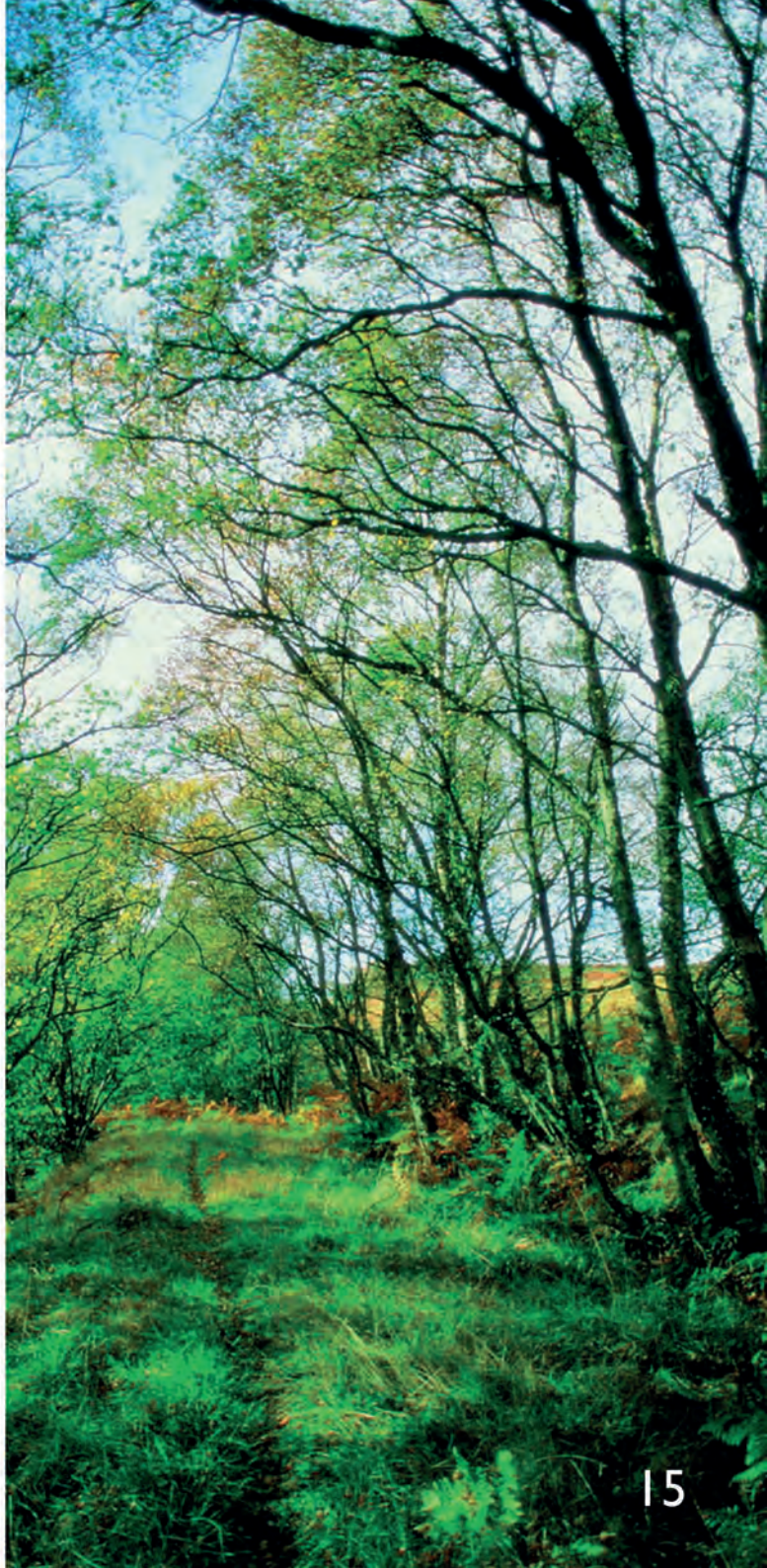
DIRECTIONS:



Park at Kielder Castle Visitor Centre. From the castle, follow the path which passes the Minotaur Maze and Angler's Arms pub, cross the road and follow signs to the Lakeside Way south shore. Bakethin wildlife dipping pond features a variety of interesting water creatures. Further along the path, visitors can catch glimpses of Kielder Viaduct to the left through the trees before reaching Bakethin bird hide (accessed by a short detour) which overlooks Bakethin Nature Reserve.

Continue down the valley until the track comes to a tarmac crossroad. Turn left towards the lake to visit Bakethin Weir and the Kielder Column artwork. Here there are fine views across Bakethin Nature Reserve to the north and west, to the hamlet of Gowanburn on the north shore and across the main body of Kielder Water to the south and east. Look for the former Border Counties railway on the north shore of Bakethin. Most of the railway track bed in this area now lies under water. On the north west skyline is the communications tower which sits on the summit of Deadwater Fell (the highest point in the area), the source of the River North Tyne and part of the exhilarating Deadwater mountain bike trail network.

To return, retrace steps. For a longer route, a further half-mile down the valley along the Lakeside Way is the Mirage artwork followed by the picturesque and tranquil Lewisburn inlet.



H KIELDER DAM (NY706875) -
THE BELLING & WAVE CHAMBER (NY695882)

DISTANCE: 1 mile or 1.6km (approx. ½ hour) each way

SYMBOLS: ⓘ * 🚶 🚲 🐾 ♿ 🚻 Hawkhope £

DIRECTIONS:

From Hawkhope car park, follow the Lakeside Way along the north shore. En route to the Belling peninsula, the path skirts the historic site of Gordon's Wall, thought to be the remains of a bastle enclosure. Following the signs for Wave Chamber, leave the Lakeside Way on the left and follow the track either to the left or the right, around the circular Belling peninsula to the headland.

This is the location for Wave Chamber, which projects an image of the water onto its floor and is part of the art and architecture programme. There are stunning views at this location taking in the dam, valve tower, Tower Knowe Visitor Centre, Whickhope inlet and Bull Crag peninsula. The path from the Lakeside Way to Wave Chamber is not designed for leisure bicycles, wheelchairs or mobility scooters.



I KIELDER DAM (NY706875) -
COCK STOOR (NY690883)

DISTANCE: 2.5 miles or 4km (approx. 1 hour) each way

SYMBOLS: ⓘ * 🚶 🚲 🐾 ♿ 🚻 Hawkhope £

DIRECTIONS:

Continuing on from the Belling (see page 16), the path heads north up the Belling inlet. At the top of the inlet, cross the bridge and head back along to a patch of Scots Pine trees on the corner of the inlet and Kielder Water. This area is known as Cock Stoor. Within the pines is 55/02, an angular steel shelter which is part of the art and architecture programme and is named after the latitude and longitude of the area.

J KIELDER DAM (NY706875) -
BELVEDERE (NY684885)

DISTANCE: 3¼ miles or 6km (approx. 1½ hours) each way

SYMBOLS: ⓘ ** 🚶 🚲 🐾 ♿ 🚻 Hawkhope
🏠 Belvedere £

DIRECTIONS:

From Cock Stoor (see above) visitors may see a stainless steel shelter further along the shoreline. This is Belvedere, part of the art and architecture programme. It looks deceptively close, however, the path turns right and moves inland along the Pot Burn and climbs through the forest before descending back down to the Belvedere.

Belvedere won the Stephen Lawrence Prize in 2000 as well as RIBA and Civic Trust awards. To return to Hawkhope, retrace steps or take the Osprey ferry from the jetty next to Belvedere. There are limited sailings from here so it is vital to check the ferry timetable in advance.

K **KIELDER DAM** (NY706875) -
PLASHETTS INCLINE (NY673900)

DISTANCE: 5 miles or 8km (approx. 2 hours) each way

SYMBOLS: ** Hawkhope

DIRECTIONS:

Continue from Belvedere heading west to Robin's Hut, a plain wooden shelter that is directly opposite Freya's Cabin on the south shore. Both are the subjects of a fairytale from the art and architecture programme. A relatively short distance from Robin's Hut is a left turning to the Quarry viewpoint. There are excellent views along the lake and across to Leapliph Waterside Park. Old Plashetts Quarry to the left of the viewpoint is where the vast majority of the stone was extracted to construct Kielder Dam. Most of this quarry is now under water.



From Plashetts Quarry, the Lakeside Way heads northwards up the west side of Plashetts Peninsula giving fabulous views of the upper area of Kielder Water and the fells beyond. Plashetts was a coal mining village which reached its peak in 1914 when it employed 126 men. Little remains to suggest the previous existence of the colliery and Plashetts village. One remnant which is still visible today is Plashetts Incline, a former wagonway which took coal from the colliery site down to the now submerged Border Counties Railway.

The Lakeside Way crosses the lower section of the incline and continues to Kielder Village. From the incline, looking back to the lake, would previously have been the coal transfer stations, Plashetts brickworks and Plashetts railway station, the sites of which are all now under the water.



By starting from Kielder Castle Visitor Centre, there are further north shore return journey options of varying distance.

L KIELDER CASTLE VISITOR CENTRE
(NY633935) - **SILVAS CAPITALIS** (NY657925)

DISTANCE: 3 miles or 4.8km (approx. 1 ¼ hours) each way

SYMBOLS: KC
 KC + Kielder village KC + Kielder village

DIRECTIONS:
 Park at Kielder Castle Visitor Centre. From the castle follow the path which passes the Minotaur Maze and Anglers Arms pub. Cross the road and follow the signs to the north shore Lakeside Way. The north shore path starts at the side of the River North Tyne which opens out into Bakethin Nature Reserve after a short distance. There is the option to take a short diversion down the slope towards the river for fine views of Kielder Viaduct which formed part of the Border Counties Railway.

Return to the Lakeside Way down the valley past Bakethin Nature Reserve and Gowanburn. Between the path and the shore is the course of the railway which disappears into the lake shortly before Bakethin Weir. Beyond Gowanburn is a small tree covered peninsula. Here you will find Silvas Capitalis, a shelter in the shape of a giant head which is part of the art and architecture programme. Step inside and listen to the sounds of the forest...



M KIELDER CASTLE VISITOR CENTRE
(NY633935) - **JANUS CHAIRS** (NY665906)

DISTANCE: 4.5 miles or 7.2km (approx. 1 ¾ hours) each way

SYMBOLS: KC KC
 KC + Kielder village KC + Kielder village

DIRECTIONS:
 Continuing from Silvas Capitalis artwork (see page 20), the path reaches another installation in the art and architecture programme, Viewpoint, which encourages the visitor to consider the experience of looking.

The path then turns to run parallel with the North Haul Road (a main artery used for the removal of timber from felling sites to the north) before winding its way to a small but very scenic peninsula on Plashetts Bay. The three unusual chairs at the end of the peninsula are the Janus Chairs, part of the art and architecture programme. These king sized seats offer visitors a variety of views.





N DUKE'S TRAIL STARTING AT KIELDER CASTLE VISITOR CENTRE (NY633935)

DISTANCE: 2¾ miles or 4.5 km (wheelchair accessible for first 1 mile or 1.6km) allow 1.5 hours

WAYMARKERS: Blue

SYMBOL: KC + Kielder Village KC
 KC + Kielder Village KC

DIRECTIONS:

This is a pleasant stroll through the grounds of Kielder Castle and the adjacent woodland. There are observation points offering views of wildlife feeding areas where the forest's many birds and Britain's native red squirrel may be seen.

The first mile of the Duke's Trail, with slight inclines and a fine graded stone and tarmac surface, is designed for use by wheelchair users and families with buggies. The remaining two miles is on a mixture of forest road and surfaced path. One sharp descent through Ravenshill Wood renders this section of the trail unsuitable for unaccompanied wheelchair users.

O DUCHESS TRAIL STARTING AT KIELDER CASTLE VISITOR CENTRE (NY633935)

DISTANCE: 1¼ miles or 3km (approx. 1¼ hours)

WAYMARKERS: Green

SYMBOL: KC + Kielder Village KC
 KC + Kielder Village KC

DIRECTIONS:

The second Duchess of Northumberland loved to take her pony and trap over the old pack horse bridge to the quieter, more picturesque parts of the estate. Follow one of her favourite routes - still a magical experience 200 years later.

The Duchess Trail is on both surfaced and unsurfaced forest paths. Before the old packhorse bridge (narrow 'humpback' bridge), the trail passes through two 'kissing' gates. After the bridge are moderate inclines as well as two sets of steps (with handrail) to take visitors to the top of Jamie's Crag's viewpoint.



P **KIELDER CASTLE VISITOR CENTRE**
(NY633935) - **DEADWATER FELL** (NY626972)

DISTANCE: 6 miles or 10km (approx. 3-4 hours) round trip

WAYMARKERS: Red

SYMBOL: KC + Kielder Village KC
 KC + Kielder Village KC

DIRECTIONS:

The summit of Deadwater Fell lies at just under 1900 feet (571 metres) and straddles the border between Scotland and England. Starting from Kielder Castle, this trail follows both forest road and surfaced trail to access the cresting open moorland above the forest.

The uphill climb is well worth the effort as the views on a clear day stretch all the way from the Lake District to the Pentland Hills near Edinburgh and even over to the North Sea coast.

Using an OS map, the more adventurous can plot a route to Kielder Stone and onto Kielderhead Moor for a full day of walking. Please note this walk has fairly strenuous sections in places and prolonged uphill climbs. Walkers should be fully prepared for the conditions and should anticipate the potential for dramatic changes in the weather.



Q **KIELDER CASTLE VISITOR CENTRE**
(NY633935) - **SKYSPACE AND KIELDER OBSERVATORY** (NY609933)

DISTANCE: 3¼ miles or 6km (approx. 2 hours) round trip

WAYMARKERS: Red

SYMBOL: KC + Kielder Village KC
 KC + Kielder Village KC

DIRECTIONS:

To access this trail, follow the tarmac public road from Kielder Castle Visitor Centre to the C200. After crossing the road at Kielder Garage, turn left and follow the waymarkers leading uphill into the forest. From this point, both unsurfaced tracks and surfaced forest roads are used to take you to Cat Cairn, the site of Skyspace artwork. Prolonged uphill climbs mark this walk. The route from Cat Cairn to the Observatory follows undulating forest road.



Skyspace, part of the art and architecture programme, was designed by internationally acclaimed American artist, James Turrell. It is a sculptural artwork at the Cat Cairn viewpoint where Turrell manipulates our normal perceptions of light and space. Kielder Observatory is also part of the programme and provides astronomers with a permanent facility in the heart of Northumberland. There are fantastic views from both of these artworks.

R **BORDERLINE CYCLING ROUTE - KIELDER CASTLE VISITOR CENTRE (NY633935) - DEADWATER STATION (NY 603968)**



DISTANCE: 6¼ miles or 11 km (approx. 1½ hours) round trip

SYMBOL: KC + Kielder Village KC KC + Kielder Village KC

DIRECTIONS:

The majority of this route follows the former Border Counties railway line (operational from 1862 to 1956) making it a relatively flat and easy ride suitable for all abilities of cyclist. The surface is mainly grassy tracks with occasional stretches on tarmac road.



Starting in Kielder Village, the trail joins the railway just to the west of the old Kielder Station (now part of the garage). The route runs parallel with the River North Tyne and takes you through open countryside with some fantastic views to the Scottish Border at Deadwater Station. To return to Kielder, retrace tracks to the village.

S **TOWER KNOWE VISITOR CENTRE (NY698868) (CIRCULAR)**

DISTANCE: Just over ½ mile or 1 km (approx. ½ hour) each way

SYMBOLS: TK TK TK TK TK

DIRECTIONS:

Start the walk from opposite the visitor centre and follow the shore line path for this half mile circular walk. On the small peninsula you will come across the remains of a prehistoric settlement including traces of a Romano British farmstead which lies by the shoreline near to the tip of the peninsula. Car parking is available at Tower Knowe Visitor Centre. This walk is on a narrow, rough path and is not designed for wheelchairs or buggies.



T BAKETHIN NORTH SHORE WALK (NY632936) (CIRCULAR)

DISTANCE: 2½ miles or 4km (approx. 1 hour)

WAYMARKERS: Orange

SYMBOLS: ● ★★ 🚶

DIRECTIONS:

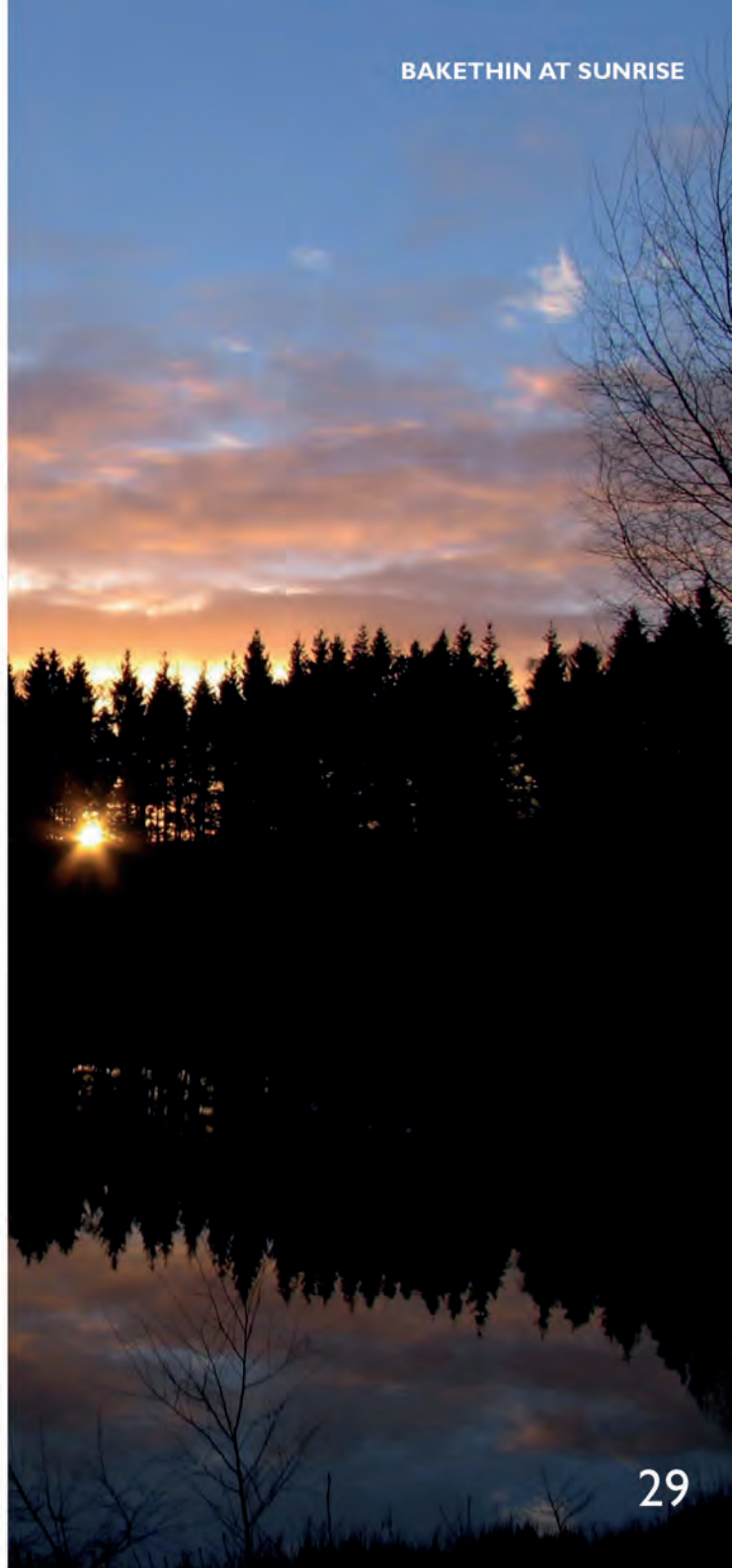
Start at Bakethin car park, turn left along the river, then turn right and cross Butteryhaugh Bridge (look out for otters).

Walk up the North Haul road (passing the Lakeside Way entrances) and turn left into the Scots Pine/Norway Spruce plantation. On leaving the woods, turn right onto an old logging track through a clear fell site. Roe deer and buzzards are frequently seen along this path and in the spring thousands of froglets can be seen in the ditches after leaving their breeding ponds.



At the end of the forest track, follow markers to the old railway line and walk along the viaduct.

Bakethin reservoir is a designated nature reserve and has a number of diverse habitats, which makes it a great place to see local wildlife. The track to the right after crossing the viaduct leads back to the car park. Alternatively continue the walk and follow signs to Bakethin bird hide, a great place to see a wide variety of bird species including a number of wading birds, herons, cormorants and ducks. Otters can be spotted particularly at dawn and dusk. The wildlife pond, located on the track to Bakethin Hide, holds a multitude of species including palmate newts, damselflies, dragonflies, toads and frogs.



U HINDHOPE LINN STARTING AT BLAKEHOPEBURNHAUGH (NY785002)

DISTANCE: Just over 1 mile or 2km (approx. 45 minutes)

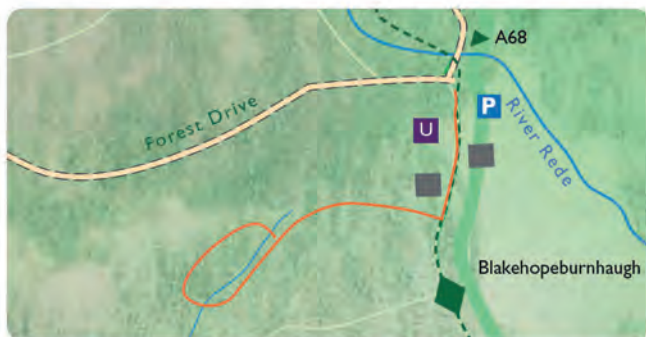
WAYMARKERS: Orange

SYMBOLS:    

DIRECTIONS:

One of the area's best kept secrets - an enchanting walk through a scenic gorge peppered with venerable trees to a hidden gem of a waterfall.

This trail is mainly on un-surfaced forest tracks that have a number of short, sharp inclines traversed by small sections of steps (with and without handrails).



Parking is at Blakehopeburnhaugh picnic site, 12 miles from Kielder Castle at the north end of the Forest Drive toll road (this site can also be reached from the A68 near Byrness). Follow the path from here onwards above a gorge. After crossing Hindhope Burn, the trail passes the top of the waterfall.



FOR YOUR SAFETY

Please be aware that some sections of the Lakeside Way are located in remote areas, away from visitor centres and dwellings, so plan ahead, consider the capabilities of your party and take responsibility for your own actions and safety.

- Please respect other path users and observe signs and notices at all times.
- Pass oncoming path users on the left.
- Cyclists and horse riders give way to walkers.
- Cyclists give way to horse riders.
- Protect plants and animals. Take your litter away with you, do not light fires and keep away from livestock.
- Please keep dogs under close control and put on a lead in livestock and agricultural areas.
- Please remove dog and horse droppings from the path into the adjacent vegetation, or bag it and take it with you.
- Do not cross fences, hedges or walls unless there are stiles or gates.
- Leave gates and property as you find them.

MOUNTAIN BIKING

For those looking for something more adventurous than leisure cycling, Kielder Water & Forest Park boasts five of the best single tracks for mountain bikers in the UK. For more information, maps and safety details go to www.visitkielder.com or one of the visitor centres.



KIELDER WATER & FOREST PARK

Walking, cycling and horse riding are just some of the many things you can do in the Park. Whilst exploring our trails don't forget to look out for artworks along the way. The abundance of contemporary art and architecture in this striking rural setting makes public art accessible to all visitors and is located at sites around the lake and within the forest. Information on all pieces is available at all visitor centres or www.visitkielder.com.

The sheer variety of habitats in Kielder Water & Forest Park, from woodland to marshy grasslands and bogs, create homes for a whole host of wildlife. Explorers may encounter badgers, roe deer, otters, shrews, seven species of bat, many woodland birds and (especially in spring) birds of prey.

BIKE HIRE

If you haven't brought your own bike, you can hire one from the hire centre next to Kielder Castle Visitor Centre.

CAR PARKING

Please note that car parking charges apply to all sites across Kielder Water & Forest Park. Tickets can be purchased at any of the visitor centres and are transferable to be used at any of the car parks within the Park. This income is reinvested into the upkeep of visitor services and infrastructure, and conservation of wildlife habitats.

Please use formal car parks/areas within Kielder Water & Forest Park at all times. Access roads and gateways may be required for operational or emergency access at any time so please do not block any road entrances, gateways or private driveways





For more information or to plan your visit call:
01434 220616

Find out more at www.visitkielder.com or
on arrival go to one of our main visitor centres:
Tower Knowe Visitor Centre, Leaplish Waterside
Park or Kielder Castle Visitor Centre.

All details were accurate at time of going to press 05/09. Kielder Partnership
accepts no responsibility for inaccuracies that may occur in this guide. Refer to
www.visitkielder.com for regular information updates.

Selected photography by Simon Fraser
Designed by r//evolution www.r-evolution.co.uk

PART FUNDED BY:



DEVELOPED BY KIELDER PARTNERSHIP:
THE CALVERT TRUST, THE ENVIRONMENT AGENCY,
FORESTRY COMMISSION, NORTHUMBERLAND COUNTY COUNCIL,
NORTHUMBRIAN WATER & COMMUNITY GROUPS.

www.visitkielder.com